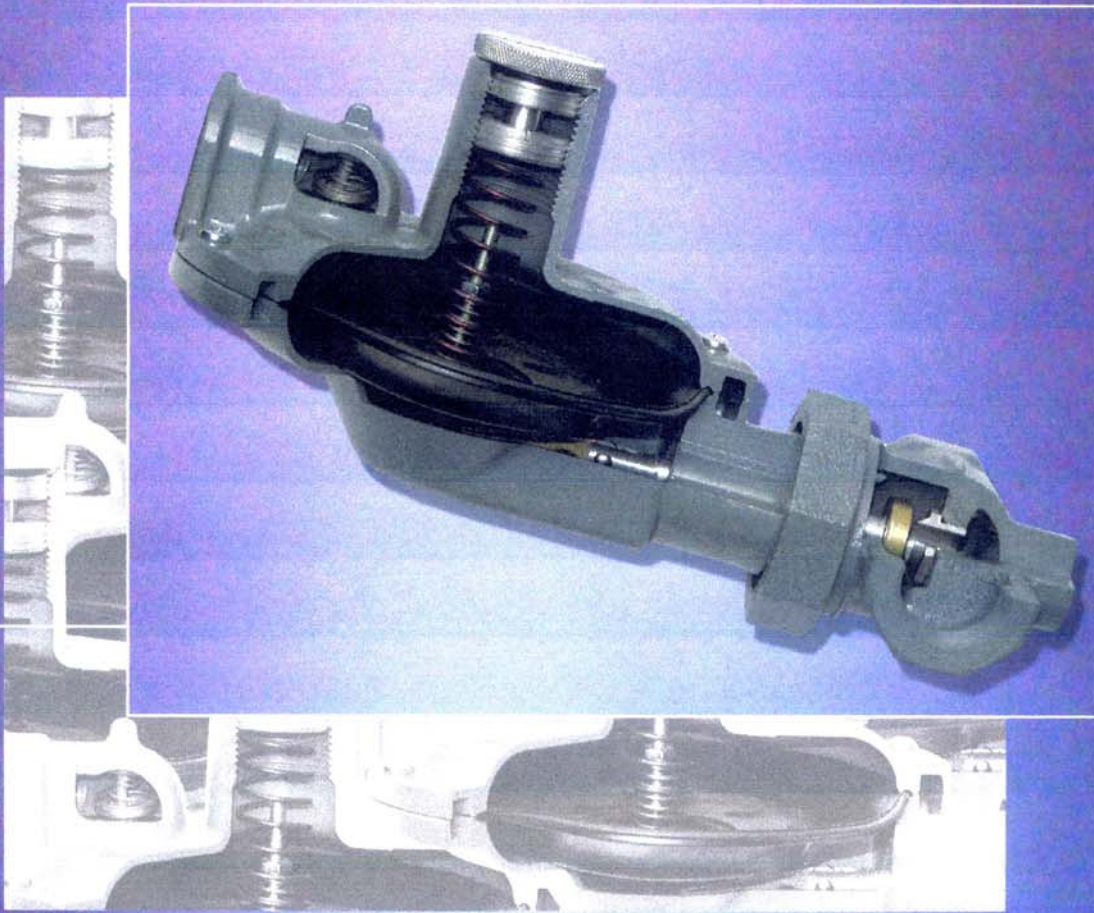


ΡΥΘΜΙΣΤΕΣ ΥΨΗΛΗΣ ΠΙΕΣΗΣ ΑΕΡΙΩΝ



# High Pressure Gas Service Regulator



Type 240 Regulator

## Technical Data



# Technical Data



## Introduction

- Specifically designed for safe, accurate pressure reduction for gas services to commercial and Industrial applications
- High pressure direct acting, diaphragm operated regulator
- Also available in P.F.M. approved version (pilot-loaded regulator)
- Certified to Canadian Standard CAN/ CGA 6.18
- Certified to American Standard B109.4

## Applications

- Flow capacity up to 3000 scfh or 85 scmh
- Use in confidence with any non-corrosive natural and manufactured gaseous media
- Also available in P.F.M. approved version (pilot-loaded)

## Body Connections

- Available with BSP or NPT threads
- Available in ASA or PN standards
- Inlet - 3/4", 1", 1 1/4", 1 1/2"
- Outlet - 3/4", 1", 1 1/4", 1 1/2"

## Spring Selection

Spring	Outlet Pressure Range	
	w.c.	mbar
126	4" - 8"	10 - 20
131	6" - 14"	15 - 35
127	10" - 17"	25 - 42
392	16" - 30"	40 - 75
393	1 - 2 psig	70 - 140
394	2 - 3 psig	140 - 210

## Value Added Services

- Meter Set Assemblies designed specific to customer requirements
- Manifold Assemblies and meter preset
- Regulation training
- On site consultation
- Inventory Management
- Custom Machining
- Application Review & Product Recommendation
- Station design and assembly available specifically designed to meet customer requirements

## Features

- Light weight construction
- Wide range of body connections
- Body and vent positions available in any orientation
- Optional external control line (ECL) version
- Wide inlet pressure range
- Ease of maintenance (spare kit and additional springs available)
- Ambient temperature -40°C to 60°C

## Options

P - Type - no internal relief capacity  
 LR - Type - limited capacity internal relief  
 R - Type - full capacity internal relief  
 SD - Type - (safety diaphragm) W/ OPCO

- No internal relief with secondary diaphragm protection. Incorporated with integral over-pressure cut-off safety device.
- Approved for indoor installations with no required vent line.
- W/ OPCO - incorporated w/ integral over - pressure cut-off safety device
- W/ UPCO/ OPCO - incorporated w/ integral under and over pressure cut-off safety device

## Materials of Construction

Body	Ductile Iron
Diaphragm Casings	Die Cast Aluminum
Diaphragm	Buna N Rubber
Valve Seat	Buna N Rubber
Diaphragm Plates	Steel
Orifice	Aluminum, Brass or Stainless Steel
Fasteners	Steel
Vent Screen	Stainless Steel
Top Cap	Aluminum

## Weights

240 - 2.1 kg (4.6 lbs)  
 w/ OPCO - add 0.5 kg (1.1 lbs)  
 w/ UPCO/OPCO - add 1.0 kg (2.2 lbs)



**Actual performance values for fig.240-C stated in scmh (sg=0.6)**  
Hi capacity model

SPRING NO. AND OUTLET	INLET PRESSURE		ORIFICE SIZE						
			effect on outlet pressure for every 15 psig change in inlet pressure						
	mbar	psig	1/8"	1/4"	1/2"	5/8"	3/4"	1"	1 1/4"
PRESSURE			1/8"	3/16"	1/4"	5/16"	3/8"	7/16"	1/2"
Spring No. 126 10-20 mbar  Set Point 18 mbar 7" wc  Droop/Boost 2.5 mbar 1" wc	70	1							
	140	2	4,4	5,5		10,7	13,2	14,7	15,5
	350	5	6,3	10,7	18,4	25,8	35,0	27,6	33,1
	700	10	10,3	20,2	25,8	40,5	55,2	40,5	47,8
	1 bar	15	14,0	33,1	33,1	55,2	77,3	55,2	51,5
	2	30	23,9	49,7	51,5	73,6	99,3	92,0	73,6
	3	45	29,4	66,2	62,5	80,9	110,4		80,9
	4	60	36,8	80,9	58,9		99,3		
	5	75	42,3	95,7	66,2				
	7	100							
8,6	125	60,7	79,1	77,3					
Spring No. 131 15 - 35 mbar 6-14"wc  Set Point 25 mbar 10" wc  Droop/Boost 10 mbar 2" wc	70	1							
	140	2	5,2	8,1	10,3	12,5	18,4	20,2	23,9
	350	5	7,7	16,6	22,1	29,4	38,6	35,0	33,1
	700	10	10,7	25,8	33,1	44,1	55,2	51,5	44,1
	1 bar	15	16,6	33,1	51,5	58,9	80,9	77,3	55,2
	2	30	22,1	47,8	58,9	77,3	88,3	125,1	69,9
	3	45	29,4	64,4	71,7	84,6	106,7	136,1	
	4	60	35,0	77,3	77,3	99,3	106,7		
	5	75	42,3	92,0	80,9	99,3			
	7	100							
8,6	125	55,2	84,6	80,9					
Spring No. 127 25 to 43 mbar 10-17"wc  Set Point 38 mbar 15" wc  Droop/Boost 5 mbar 2" wc	70	1							
	140	2							
	350	5	7,7	11,0	16,2	23,9	25,8	29,4	33,1
	700	10	10,3	16,6	27,6	35,0	47,8	47,8	44,1
	1 bar	15	12,9	23,9	47,8	51,5	66,2	69,9	55,2
	2	30	20,2	46,0	69,9	73,6	84,6	106,7	73,6
	3	45	27,6	64,4	73,6	80,9	114,0	99,3	
	4	60	38,6	64,9	80,9	88,3	106,7		
	5	75	42,3	88,3	88,3	92,0			
	7	100							
8,6	125	68,1	86,5	73,6					
Spring No. 392 40-76 mbar  Set Point 70 mbar 28" wc (1psi) Droop 10 mbar 5" wc	140	2							
	350	5	7,0	14,7	22,1	23,9	29,4	35,0	36,8
	700	10	11,0	23,9	31,3	40,5	51,5	55,2	44,1
	1 bar	15	16,6	27,6	40,5	55,2	69,9	69,9	62,5
	2	30	22,1	40,5	73,6	73,6	73,6	99,3	80,9
	3	45	29,4	66,2	77,3	80,9	106,7	110,4	82,8
	4	60	36,8	77,3	92,0	92,0	106,7	106,7	82,8
	5	75	44,1	80,9	103,0	99,3			
	7	100							
	8,6	125	66,2	88,3	103,0				
Spring No. 393 70 to 140 mbar 1-2 psig Set Point 140 mbar 2 psig Droop 0.3 psig 20 mbar	350	5	7,4	13,2	16,6	23,9	29,4	29,4	36,8
	700	10	10,3	18,4	25,8	33,1	40,5	44,1	40,5
	1 bar	15	12,9	27,6	36,8	47,8	66,2	66,2	58,9
	2	30	20,2	44,1	58,9	73,6	92,0	103,0	69,9
	3	45	29,4	58,9	66,2	88,3	114,0	136,1	88,3
	4	60	36,8	73,6	88,3	103,0	121,4	136,1	92,0
	5	75	42,3	84,6	92,0	114,0			
	7	100							
	8,6	125	58,9	106,7	110,4	99,3			
	Spring No. 394 140-210 mbar 2-3 psi Set Point 175 mbar 2.5 psig  Droop 0.4 psig 28 mbar	350	5	7,4	14,3	13,2	20,2	25,8	33,1
700		10	10,7	18,4	29,4	33,1	40,5	42,3	46,0
1 bar		15	15,5	27,6	36,8	46,0	47,8	77,3	77,3
2		30	22,1	44,1	55,2	73,6	92,0	95,7	99,3
3		45	29,4	58,9	66,2	84,6	103,0	121,4	106,7
4		60	36,8	77,3	84,6	95,7	114,0	128,8	103,0
5		75	42,3	84,6	95,7	114,0	117,7	125,1	
7		100							
8,6		125	62,5	117,7	114,0	117,7	117,7		

**BODY TYPE**

Specially Designed Meter Set Assemblies To Customer Requirements

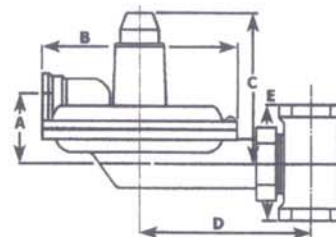


TYPE 240R - STRAIGHT BODY

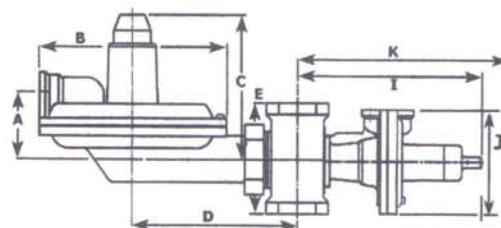


TYPE 240R/290 OPGC

**DIMENSIONAL DRAWINGS**

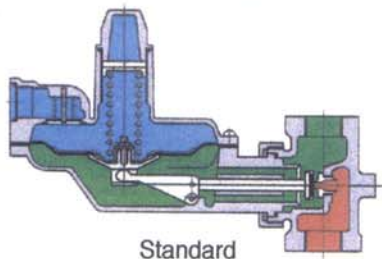


TYPE 240R - STRAIGHT BODY

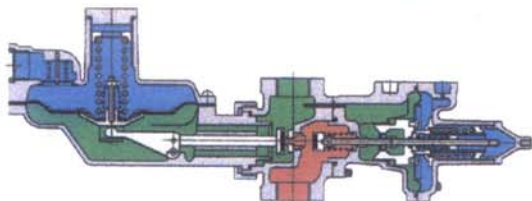


TYPE 240R/309 UPGC/OPCO

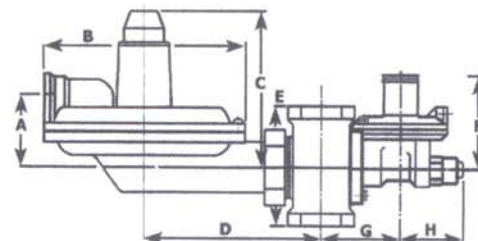
**SECTIONAL DIAGRAMS**



Standard



w/Safety Device



TYPE 240R/290 OPGC

Body Size	A	B	C	D	E	F	G	H	J	K	L	M	N	O
1/2, 3/4, 1"	6 3/4"	2 1/4"	6"	5 1/4"	4"	2"	2"	3 3/4"	5 3/4"	4 1/4"	2 1/2"	2 1/4"	3 3/4"	3 3/4"
1 1/4, 1 1/2"	6 3/4"	2 1/4"	6"	5 1/4"	5"	2"	2"	3 3/4"	5 3/4"	4 1/4"	2 1/2"	2 1/4"	3 3/4"	3 3/4"

**Bryan Donkin RMG Canada Limited**



A Member of the RMG Group of Companies

Serving the Gas Industry WORLDWIDE



**Contact Information**

Bryan Donkin RMG Canada Limited  
 P.O. box 427  
 50 Clarke Street South  
 Woodstock, Ontario  
 Canada  
 N4S 8K1  
 Phone: 1 519-539-8531  
 Fax: 1 519-537-3339  
 Email: sales@bdrmcanada.com



Solutions in:

- Gas pressure regulators and safety devices
- Metering
- Design/Assembly of Gas Control Modules, Complete Regulating & Metering Stations
- Filters, Pre-Heaters, Flame Arrestors
- Electronic Flow Corrector Systems, Odorizers, Data Logging, Recording & Control Systems, Station Management

[www.rmg.de](http://www.rmg.de)