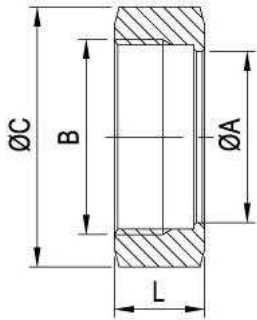
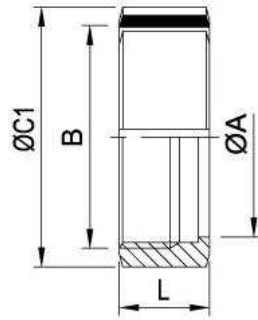


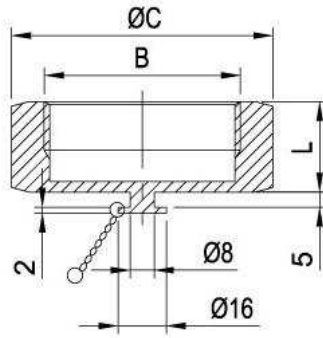
IDF-13H



IDF-13R



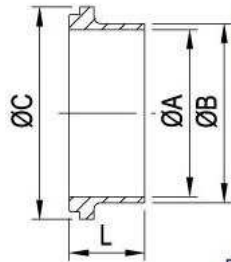
IDF-13HBN



IDF-13 NUT

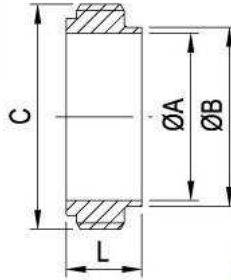
SIZE	ØA	B	ØC	ØC1	L
1.0"	30.5	34.34x8T ACME	46	48	30
1.5"	43.5	47.86x8T ACME	60	64	30
2.0"	57	61.37x8T ACME	75	77	30
2.5"	70.7	74.88x8T ACME	90	91	30
R 3.0"	83.3	88.4 x8T ACME	106	106	30
H 3.0"	83.3	88.4 x8T ACME	105	105	30
R 4.0"	112	115.41x8T ACME	135	135	34.9
H 4.0"	112	122.05x6T ACME	133	133	34.9

IDF Welding Liner IDF-14



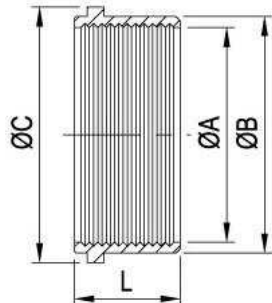
SIZE	IDF		JIS		ØC	L
	ØA	ØB	ØA	ØB		
1.0"	22.6	25.6	23	25.4	33.8	21.5
1.5"	35.6	38.6	35.7	38.1	47	21.5
2.0"	48.6	51.6	47.8	50.8	60.5	21.5
2.5"	60.3	64.1	59.5	63.5	74	21.5
3.0"	72.9	76.7	72.3	76.3	87.5	21.5
R 4.0"	97.6	101.6			120.6	30
H 4.0"	97.6	102.5	97.6	101.6	114.1	21.5

IDF Welding Male IDF-15



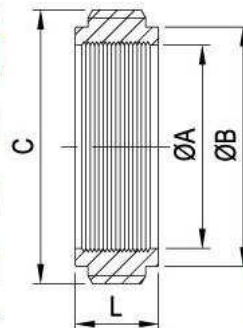
SIZE	IDF		JIS		C	L
	ØA	ØB	ØA	ØB		
1.0"	22.1	25.4	23	25.4	37.13x8T ACME	21.5
1.5"	34.8	38	35.7	38.1	50.65x8T ACME	21.5
2.0"	47.5	51	47.8	50.8	64.16x8T ACME	21.5
2.5"	60.2	63.5	59.5	63.5	77.76x8T ACME	21.5
3.0"	72.9	76.2	72.3	76.3	91.19x8T ACME	21.5
R 4.0"	97.6	101.6			118.2x8T ACME	30
H 4.0"	97.6	102.5	97.6	101.6	125.9x6T ACME	21.5

IDF Expanding Liner IDF-14R



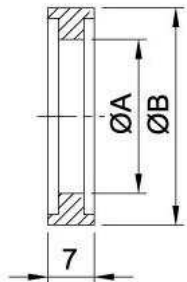
SIZE	ØA	ØB	ØC	L
1.0"	25.5	29.2	33.8	20
1.5"	38.2	42.7	47	20
2.0"	50.9	56.2	60.5	25
2.5"	63.6	69.9	74	30
3.0"	76.3	82.6	87.5	30
R 4.0"	101.7	108.4	114.1	30
H 4.0"	101.7	111.1	120.6	30

IDF Expanding Male IDF-15R



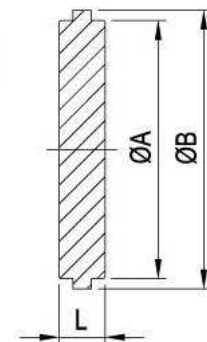
SIZE	ØA	ØB	C	L
1.0"	25.5	29.2	37.13x8T ACME	19.5
1.5"	38	42.5	50.65x8T ACME	19.5
2.0"	50.9	56.2	64.16x8T ACME	19.5
2.5"	63.6	69.9	77.76x8T ACME	25
3.0"	76.3	82.6	91.19x8T ACME	30
R 4.0"	101.7	108.8	118.2 x8T ACME	35
H 4.0"	101.7	111.1	125.9 x6T ACME	35

IDF Seal Ring



SIZE	ØA	ØB
1.0"	23	32.5
1.5"	36	46
2.0"	49	59.5
2.5"	60.7	73.2
3.0"	73.2	86.5
R 4.0"	98	113
H 4.0"	98	119.6

IDF-14B Blanks



SIZE	ØA	ØB	L
1.0"	29.2	33.8	10.5
1.5"	42.7	47	10.5
2.0"	56.2	60.5	10.5
2.5"	69.9	74	10.5
3.0"	82.6	87.5	10.5
R 4.0"	111.1	114.1	12.6
H 4.0"	111.1	120.6	12.6

