

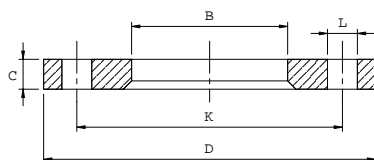
FLANGE ALU PIANE SCORREVOLI CIECHE



ALU

Flange piane scorrevoli per dimensioni ISO

Loose flanges ISO size
Bridas planas locas para dimensiones ISO
Lose Flansche ISO-Abmessungen
Brides tournantes plates pour dimensions ISO



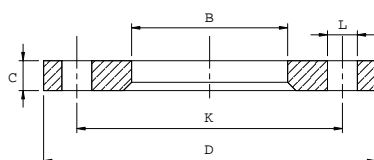
Dimensioni per accoppiamenti secondo norma UNI 2223-67 PN 10
Dimensions according to DIN 2642 PN 10 specifications
Dimensiones segun DIN 2642 PN 10
Abmessungen nach DIN 2642 PN 10
Dimensions pour couplage selon DIN 2642 PN 10

| DN | D | K | L | Holes N° | B ISO | C |
|------|------|------|----|----------|-------|----|
| 10 | 90 | 60 | 14 | 4 | 19 | 12 |
| 15 | 95 | 65 | 14 | 4 | 24 | 12 |
| 20 | 105 | 75 | 14 | 4 | 30 | 12 |
| 25 | 115 | 85 | 14 | 4 | 36 | 12 |
| 32 | 140 | 100 | 18 | 4 | 46 | 16 |
| 40 | 150 | 110 | 18 | 4 | 54 | 16 |
| 50 | 165 | 125 | 18 | 4 | 65 | 16 |
| 65 | 185 | 145 | 18 | 4 | 81 | 16 |
| 80 | 200 | 160 | 18 | 8 | 94 | 18 |
| 100 | 220 | 180 | 18 | 8 | 119 | 18 |
| 125 | 250 | 210 | 18 | 8 | 145 | 18 |
| 150 | 285 | 240 | 22 | 8 | 173 | 18 |
| 200 | 340 | 295 | 22 | 8 | 225 | 20 |
| 250 | 395 | 350 | 22 | 12 | 279 | 22 |
| 300 | 445 | 400 | 22 | 12 | 329 | 22 |
| 350 | 505 | 460 | 22 | 16 | 362 | 22 |
| 400 | 565 | 515 | 25 | 16 | 413 | 25 |
| 450 | 615 | 565 | 25 | 20 | 465 | 25 |
| 500 | 670 | 620 | 25 | 20 | 517 | 28 |
| 600 | 780 | 725 | 30 | 20 | 618 | 30 |
| 700 | 895 | 840 | 30 | 24 | 715 | 40 |
| 800 | 1015 | 950 | 33 | 24 | 825 | 40 |
| 900 | 1115 | 1050 | 33 | 28 | 930 | 44 |
| 1000 | 1230 | 1160 | 36 | 28 | 1030 | 44 |
| 1200 | 1455 | 1380 | 39 | 32 | 1240 | 52 |

ALU

Flange piane scorrevoli per dimensioni Metriche

Loose flanges in Metric size
Bridas planas locas para dimensiones Métricas
Lose Flansche Metrische Abmessungen
Brides tournantes plates pour dimensions Métriques



Dimensioni per accoppiamenti secondo norma UNI 2223-67 PN 10
Dimensions according to DIN 2642 PN 10 specifications
Dimensiones segun DIN 2642 PN 10
Abmessungen nach DIN 2642 PN 10
Dimensions pour couplage selon DIN 2642 PN 10

| DN | D | K | L | Holes N° | B MET | C |
|------|------|------|----|----------|-------|----|
| 10 | 90 | 60 | 14 | 4 | 19 | 12 |
| 15 | 95 | 65 | 14 | 4 | 24 | 12 |
| 20 | 105 | 75 | 14 | 4 | 30 | 12 |
| 25 | 115 | 85 | 14 | 4 | 33 | 12 |
| 32 | 140 | 100 | 18 | 4 | 42 | 16 |
| 40 | 150 | 110 | 18 | 4 | 48 | 16 |
| 50 | 165 | 125 | 18 | 4 | 60 | 16 |
| 65 | 185 | 145 | 18 | 4 | 75 | 16 |
| 80 | 200 | 160 | 18 | 8 | 90 | 18 |
| 100 | 220 | 180 | 18 | 8 | 111 | 18 |
| 125 | 250 | 210 | 18 | 8 | 136 | 18 |
| 150 | 285 | 240 | 22 | 8 | 161 | 18 |
| 200 | 340 | 295 | 22 | 8 | 212 | 20 |
| 250 | 395 | 350 | 22 | 12 | 264 | 22 |
| 300 | 445 | 400 | 22 | 12 | 315 | 22 |
| 350 | 505 | 460 | 22 | 16 | 362 | 22 |
| 400 | 565 | 515 | 25 | 16 | 413 | 25 |
| 450 | 615 | 565 | 25 | 20 | 465 | 25 |
| 500 | 670 | 620 | 25 | 20 | 517 | 28 |
| 600 | 780 | 725 | 30 | 20 | 618 | 30 |
| 700 | 895 | 840 | 30 | 24 | 715 | 40 |
| 800 | 1015 | 950 | 33 | 24 | 825 | 40 |
| 900 | 1115 | 1050 | 33 | 28 | 930 | 44 |
| 1000 | 1230 | 1160 | 36 | 28 | 1030 | 44 |
| 1200 | 1455 | 1380 | 39 | 32 | 1240 | 52 |