

Euro Hand Wheel Low Pressure Regulator (A310)

CE approval according to European Standard EN12864 other approvals as well.

Designed for Butane, Propane or any mix. Max rated capacity 1.5 kg Gas/h.

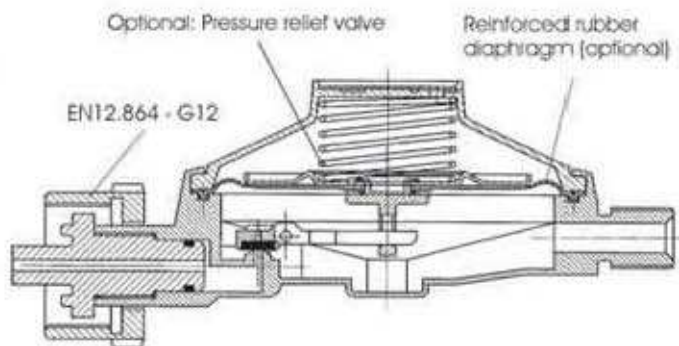
Butane: Inlet press. 0.3 to 7.5 bar - Outlet press. 28-30 mbar.

Propane: Inlet press. 1 to 16 bar - Outlet press. 37 mbar.

Propane: Inlet press. 1 to 16 bar - Outlet press. 50 mbar.

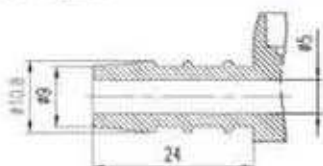


CHRYSsafidis

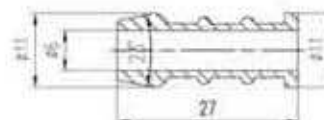


Inlet and outlet hose nozzles:

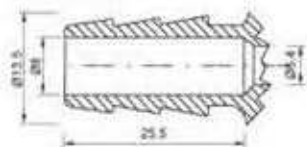
1: For Poland



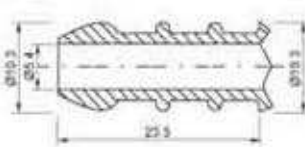
2: For Egypt



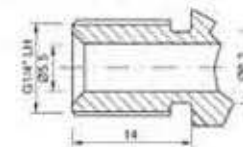
3: For Gas Hose 10-11 mm
EN 12864 H51



4: For Gas Hose 8 mm
EN 12864 H50

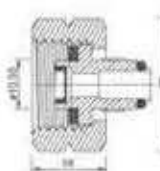


5: Threaded connect
G1/4" LH - EN12864 - H4

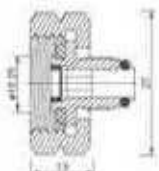


Other outlet nozzles available on request

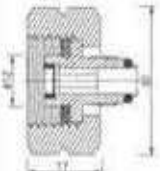
EN12864-G1



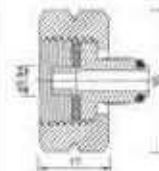
EN12864-G2



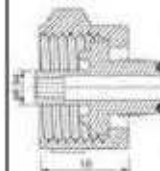
EN12864-G4



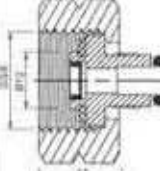
EN12864-G5



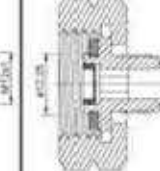
EN12864-G12



EN12864-G8



EN12864-SWISS



Inlet connections

The inlet connections illustrated are only examples. Many more are available on request