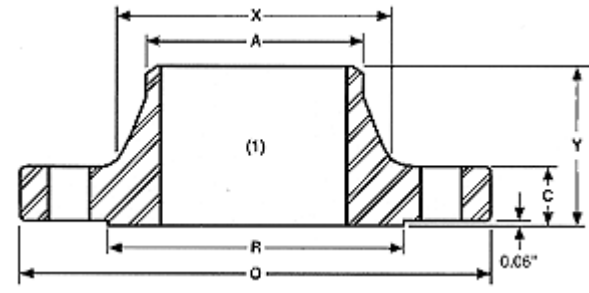




ΦΛΑΝΤΖΕΣ ΛΑΙΜΟΥ 300lb ΕΥΡΩΠΗΣ

WELDING NECK ASME 16.5 *Class 300 Lb.*



ΜΟΝΑΔ.	ΟΝΟΜ. ΔΙΑΣΤ.	ΕΞΩΤ. ΔΙΑΜ. ΦΛΑΝΤΖΑΣ	ΠΛΑΧΟΣ ΦΛΑΝΤΖΑΣ	ΔΙΑΜ. ΠΑΤΟΥΡΑΣ	ΔΙΑΜ. ΣΤΗ ΒΑΣΗ ΤΟΥ ΛΑΙΜΟΥ	ΔΙΑΜΕΤΡ. ΛΑΙΜΟΥ ΣΤΗ ΘΕΣΗ ΣΥΓΚΟΛ.	ΣΥΝΟΛ. ΥΨΟΣ	ΠΛΗΘ. ΟΡΙΩΝ	ΔΙΑΜ. ΟΡΙΩΝ	ΔΙΑΜ. ΚΟΧΛΙΩΝ	ΔΙΑΜ. ΚΕΝΤΡΩΝ ΟΡΙΩΝ	ΒΑΡΟΣ περίπου (pounds/Kg)
		O	C	R	X	A	Y					
in.	1/2"	3.75	0.56	1.38	1.50	0.84	2.06	4	0.62	1/2	2.62	2
mm.		95.3	14.2	35.1	38.1	21.3	52.3		15.7	12.7	66.5	1
in.	3/4"	4.62	0.62	1.69	1.88	1.05	2.25	4	0.75	5/8	3.25	3
mm.		117.3	15.7	42.9	47.8	26.7	57.2		19.1	15.9	82.6	1
in.	1"	4.88	0.69	2.00	2.12	1.32	2.44	4	0.75	5/8	3.50	4
mm.		124.0	17.5	50.8	53.8	33.5	62.0		19.1	15.9	88.9	2
in.	1 1/4"	5.25	0.75	2.50	2.50	1.66	2.56	4	0.75	5/8	3.88	5
mm.		133.4	19.1	63.5	63.5	42.2	65.0		19.1	15.9	98.6	2
in.	1 1/2"	6.12	0.81	2.88	2.75	1.90	2.69	4	0.88	3/4	4.50	7
mm.		155.4	20.6	73.2	69.9	48.3	68.3		22.4	19.1	114.3	3
in.	2"	6.50	0.88	3.62	3.31	2.38	2.75	8	0.75	5/8	5.00	9
mm.		165.1	22.4	91.9	84.1	60.5	69.9		19.1	15.9	127.0	4
in.	2 1/2"	7.50	1.00	4.12	3.94	2.88	3.00	8	0.88	3/4	5.88	12
mm.		190.5	25.4	104.6	100.1	73.2	76.2		22.4	19.1	149.4	5
in.	3"	8.25	1.12	5.00	4.62	3.50	3.12	8	0.88	3/4	6.62	15
mm.		209.6	28.4	127.0	117.3	88.9	79.2		22.4	19.1	168.1	7
in.	3 1/2"	9.00	1.19	5.50	5.25	4.00	3.19	8	0.88	3/4	7.25	18
mm.		228.6	30.2	139.7	133.4	101.6	81.0		22.4	19.1	184.2	8
in.	4"	10.00	1.25	6.19	5.75	4.50	3.38	8	0.88	3/4	7.88	25
mm.		254.0	31.8	157.2	146.1	114.3	85.9		22.4	19.1	200.2	11
in.	5"	11.00	1.38	7.31	7.00	5.56	3.88	8	0.88	3/4	9.25	32
mm.		279.4	35.1	185.7	177.8	141.2	98.6		22.4	19.1	235.0	15
in.	6"	12.50	1.44	8.50	8.12	6.63	3.88	12	0.88	3/4	10.62	42
mm.		317.5	36.6	215.9	206.2	168.4	98.6		22.4	19.1	269.7	19
in.	8"	15.00	1.62	10.62	10.25	8.63	4.38	12	1.00	7/8	13.00	67
mm.		381.0	41.1	269.7	260.4	219.2	111.3		25.4	22.2	330.2	30
in.	10"	17.50	1.88	12.75	12.62	10.75	4.62	16	1.12	1	15.25	91
mm.		444.5	47.8	323.9	320.5	273.1	117.3		28.4	25.4	387.4	41
in.	12"	20.50	2.00	15.00	14.75	12.75	5.12	16	1.25	1 1/8	17.75	140
mm.		520.7	50.8	381.0	374.7	323.9	130.0		31.8	28.6	450.9	64
in.	14"	23.00	2.12	16.25	16.75	14.00	5.62	20	1.25	1 1/8	20.25	180
mm.		584.2	53.8	412.8	425.5	355.6	142.7		31.8	28.6	514.4	82
in.	16"	25.50	2.25	18.50	19.00	16.00	5.75	20	1.38	1 1/4	22.50	250
mm.		647.7	57.2	469.9	482.6	406.4	146.1		35.1	31.8	571.5	113